

# Red Hat Insights for Red Hat Ansible Automation Platform



## Tower Operator

Are jobs being run at a normal rate?  
If not, what happened?

How many jobs are running a day?

Is something taking up too much  
system bandwidth?

### Key features

- **Fine-grained filtering by date range, template, specific cluster and more**
- **Higher-level pass/fail rates**
- **Pass/fail capabilities**
- **Drill-down cluster analysis**



## Automation Engineers

Why is this job taking longer than I thought?

What is the day to day success of jobs?

Whats the pass/fail rate?

When did failure occur?

### Key features

- **Job explorer**  
Includes productivity and ROI calculator  
Shows bottlenecks in playbooks and how to improve your playbooks
- **New! Enhanced analytics data introspection**  
Use new filters to explore with greater depth



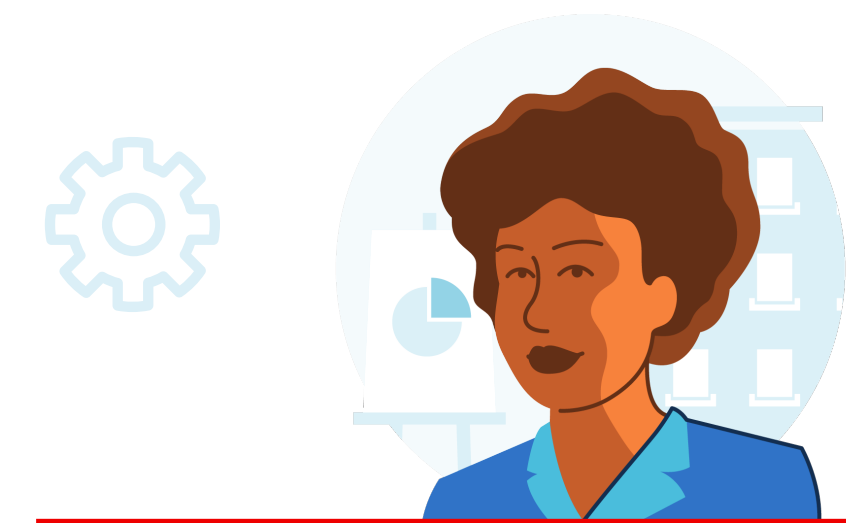
## IT Executive

How can success be measured and reported?

How can we see the high-level picture?

### Key features

- **High level static reporting**  
Automation engineers can easily report success to their boss and show success of automation wider across the company



## IT Business Analyst

How is automation being used?

How is my automation initiative going?

Which of my teams are actually  
using automation?

### Key features

- **High-level, point-in-time customizable reports**  
Quickly export and circulate important automation results
- **Return-on-Investment calculator**
- **Organization statistics tab**